

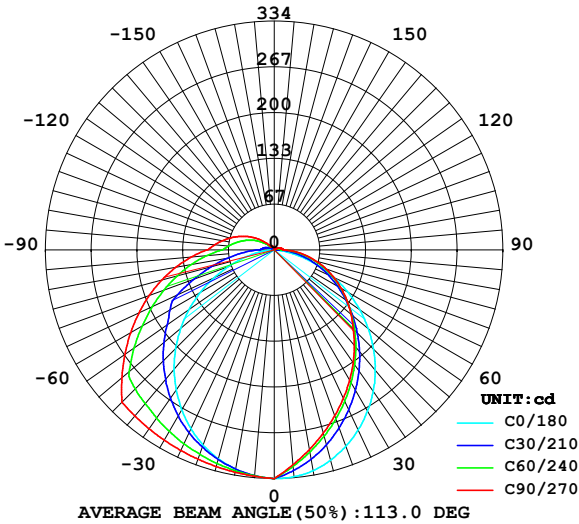
LUMINAIRE PHOTOMETRIC TEST REPORT

Report number:

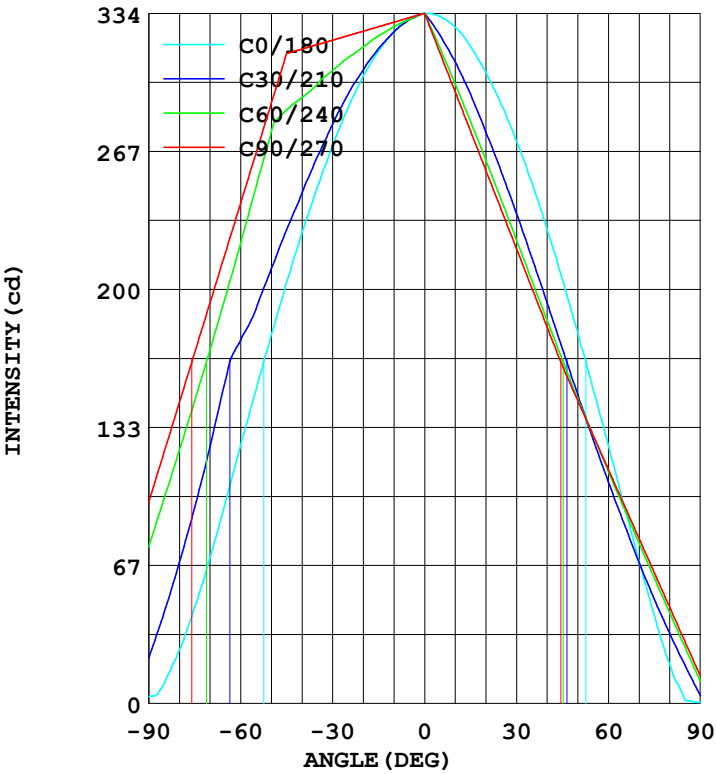
MANUFACTURER:	Address:	
NAME: 551119	TYPE:	WEIGHT:
SPECIFICATION:	DIMENSION:	SERIAL No.:

DATA OF LAMP		Imax(cd)	333.5	S/MH(C0/180)	1.21
MODEL		EFFICIENCY(%)	100.0	S/MH(C90/270)	1.47
NOMINAL POWER(W)	16	TOTAL FLUX(lm)	1068.9	Voltage(V)	216.5
RATED VOLTAGE(V)	216	EFFICIENCY(lm/W)	67.2	Current(A)	0.136
NOMINAL FLUX(lm)	1069.0	η up(%)	6.7	Power(W)	15.90
LAMPS QUANTITY	1	η down(%)	93.3	Power Factor(PF)	0.539
TEST VOLTAGE(V)	216.5	Effictive Flux(lm)	1028.0	EEI	0.202

LUMINOUS INTENSITY DISTRIBUTION



LUMINOUS INTENSITY DISTRIBUTION



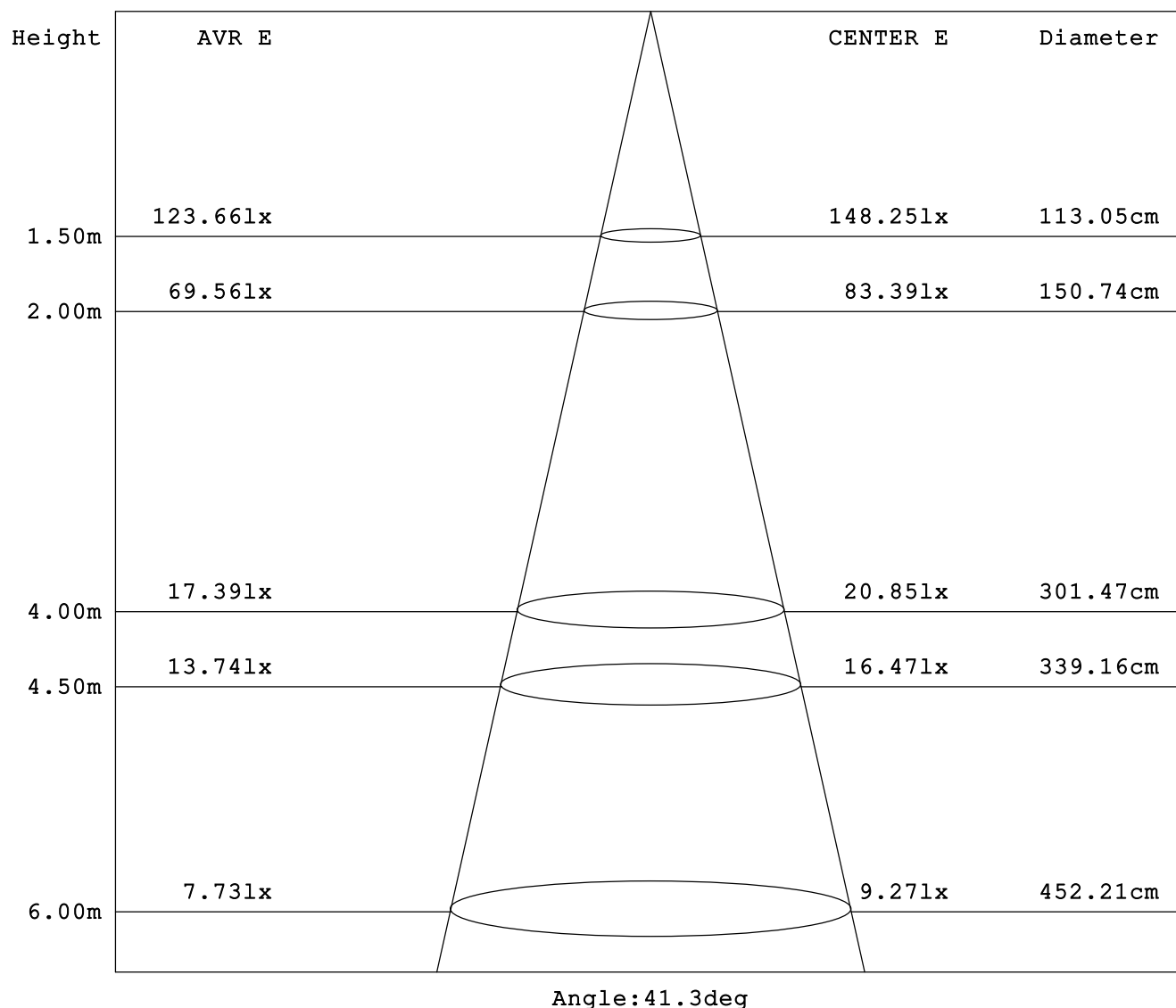
Test System:HOPOO HPG1900
Temperature:25.3DEG
Operators:
Test Date:2024年05月15日

Test Set: 5.0deg/s B-Beta (TYPE B)
Humidity:65.0%
Test Distance:16.000 m
Remarks:

AVERAGE AND CENTER E Figure

Report number:

MANUFACTURER:	Address:	
NAME: 551119	TYPE:	WEIGHT:
SPECIFICATION:	DIMENSION:	SERIAL No.:



Test System: HOPOO HPG1900
Temperature: 25.3DEG
Operators:
Test Date: 2024年05月15日

Test Set: 5.0deg/s B-Beta (TYPE B)
Humidity: 65.0%
Test Distance: 16.000 m
Remarks:

HONGPU GONIOPHOTOMETERS SYSTEM TEST REPORT

ZONAL FLUX DIAGRAM

Report number:

MANUFACTURER:	Address:	
NAME: 551119	TYPE:	WEIGHT:
SPECIFICATION:	DIMENSION:	SERIAL No.:

γ	C0	C45	C90	C135	C180	C225	C270	C315	γ	Φ zone	Φ total
5.0	331.0	330.4	331.4	331.6	332.0	319.5	314.6	318.6	0- 5	7.855	7.855
10.0	324.6	325.7	329.2	328.0	326.9	303.9	295.6	302.3	5- 10	22.94	30.80
15.0	315.3	319.1	327.0	323.1	317.4	286.7	276.7	284.3	10- 15	36.85	67.65
20.0	303.3	311.7	324.9	316.3	305.1	268.1	257.7	265.3	15- 20	49.26	116.9
25.0	287.4	302.6	322.7	308.6	289.5	248.4	238.8	245.6	20- 25	59.96	176.8
30.0	269.8	293.3	320.5	300.1	271.8	228.6	219.9	225.0	25- 30	68.77	245.6
35.0	249.3	282.5	318.4	291.2	251.9	208.5	200.9	204.1	30- 35	75.58	321.2
40.0	227.3	269.9	316.2	281.7	229.1	188.0	182.0	182.7	35- 40	80.34	401.5
45.0	203.5	258.1	314.1	272.2	204.8	167.9	163.0	161.4	40- 45	83.09	484.6
50.0	178.1	245.6	290.0	262.0	179.1	147.8	146.4	140.6	45- 50	83.49	568.1
55.0	151.5	231.5	265.9	250.5	152.0	128.2	129.7	120.5	50- 55	81.00	649.1
60.0	124.9	202.7	241.8	219.1	124.9	109.2	113.1	102.4	55- 60	76.12	725.2
65.0	97.27	174.1	217.7	188.3	96.51	91.10	96.51	85.30	60- 65	69.23	794.5
70.0	70.40	146.7	193.6	158.4	68.86	73.34	79.87	68.73	65- 70	60.70	855.2
75.0	46.59	121.0	169.5	129.5	42.75	56.25	63.23	52.93	70- 75	51.04	906.2
80.0	25.85	96.82	145.4	101.6	18.94	39.60	46.59	37.77	75- 80	40.76	947.0
85.0	9.472	73.65	121.3	74.57	1.536	23.52	29.95	23.20	80- 85	30.33	977.3
90.0	3.328	51.71	97.27	48.38	0.512	7.680	13.31	8.960	85- 90	20.22	997.6
95.0	0.256	44.82	87.26	41.72	0	6.723	12.06	7.763	90- 95	14.38	1012
100.0	0	38.50	77.25	35.79	0.256	5.840	10.80	6.643	95-100	12.52	1025
105.0	0.256	32.43	67.24	29.86	0.256	4.993	9.557	5.564	100-105	10.65	1035
110.0	0.256	26.25	57.23	23.86	0.256	4.201	8.305	4.496	105-110	8.793	1044
115.0	0.512	20.12	47.21	17.77	0.512	3.449	7.054	3.342	110-115	6.975	1051
120.0	0.512	13.51	37.20	11.20	0.768	2.553	5.802	2.436	115-120	5.245	1056
125.0	0.768	6.603	27.19	4.378	0.768	1.587	4.551	1.339	120-125	3.683	1060
130.0	0.768	5.872	17.18	3.920	1.024	1.764	3.299	1.233	125-130	2.382	1062
135.0	1.024	5.347	7.168	4.054	1.280	1.792	2.048	1.280	130-135	1.455	1064
140.0	1.280	5.099	6.627	4.049	1.536	1.792	2.048	1.454	135-140	1.120	1065
145.0	1.280	4.617	6.087	3.952	1.536	1.941	2.048	1.536	140-145	0.990	1066
150.0	1.536	4.229	5.546	3.857	1.792	1.956	2.048	1.536	145-150	0.853	1067
155.0	1.792	3.980	5.006	3.717	1.792	2.048	2.048	1.792	150-155	0.718	1067
160.0	1.792	3.608	4.465	3.709	2.048	2.048	2.048	1.792	155-160	0.578	1068
165.0	2.048	3.313	3.925	3.280	2.048	2.075	2.048	1.792	160-165	0.441	1068
170.0	2.048	3.072	3.384	3.206	2.048	2.048	2.048	2.043	165-170	0.304	1069
175.0	2.304	2.696	2.844	2.902	2.048	2.048	2.048	2.048	170-175	0.176	1069
180.0	2.304	2.304	2.304	2.304	2.048	2.048	2.048	2.048	175-180	0.055	1069
DEG	LUMINOUS INTENSITY:cd								UNIT:lm		

Test System:HOPOO HPG1900
Temperature:25.3DEG
Operators:
Test Date:2024年05月15日

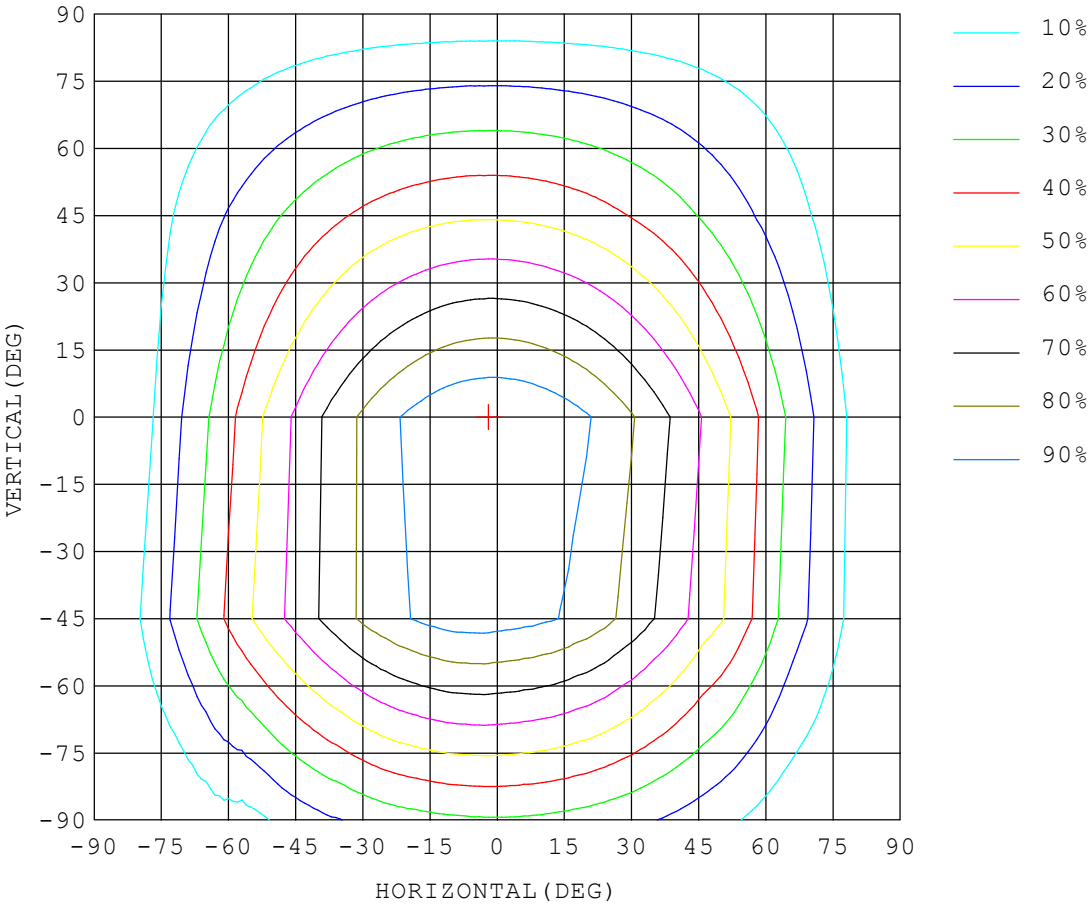
Test Set: 5.0deg/s B-Beta (TYPE B)
Humidity:65.0%
Test Distance:16.000 m
Remarks:

ISOCANDELA DIAGRAM

Report number:

MANUFACTURER:	Address:	
NAME: 551119	TYPE:	WEIGHT:
SPECIFICATION:	DIMENSION:	SERIAL No.:

UNIT: cd



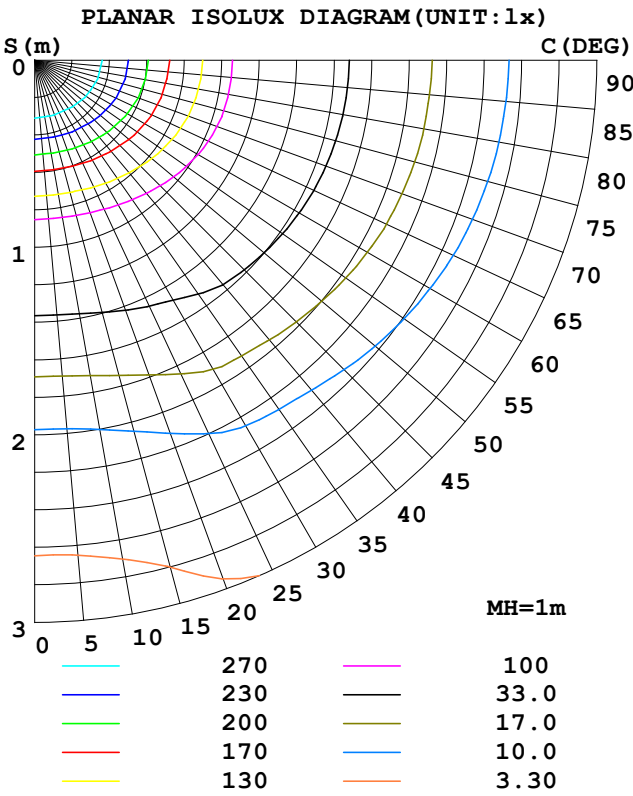
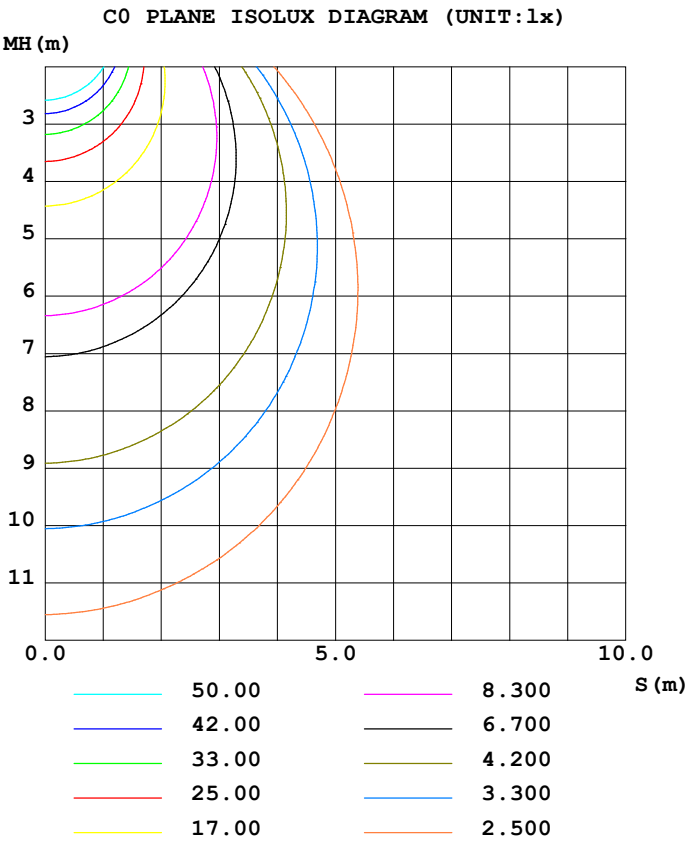
Test System:HOPOO HPG1900
Temperature:25.3DEG
Operators:
Test Date:2024年05月15日

Test Set: 5.0deg/s B-Beta (TYPE B)
Humidity:65.0%
Test Distance:16.000 m
Remarks:

ISOLUX DIAGRAM

Report number:

MANUFACTURER:	Address:	
NAME: 551119	TYPE:	WEIGHT:
SPECIFICATION:	DIMENSION:	SERIAL No.:



Test System:HOPOO HPG1900
Temperature:25.3DEG
Operators:
Test Date:2024年05月15日

Test Set: 5.0deg/s B-Beta (TYPE B)
Humidity:65.0%
Test Distance:16.000 m
Remarks:

LUMINOUS DISTRIBUTION INTENSITY DATA

Report number:

MANUFACTURER:	Address:				
NAME: 551119	TYPE:			WEIGHT:	
SPECIFICATION:	DIMENSION:			SERIAL No.:	

UNIT: cd

C (DEG) γ (DEG)	0	5	10	15	20	25	30	35	40	45	50	55	60	65	70
0.0	334	334	334	334	334	334	334	334	334	334	334	334	334	334	334
5.0	331	331	331	331	330	330	330	330	330	330	330	331	331	331	331
10.0	325	324	324	324	324	324	325	325	325	326	326	327	327	328	328
15.0	315	315	315	315	315	316	317	317	318	319	320	322	323	323	325
20.0	303	303	303	303	304	305	306	308	310	312	314	316	317	319	321
25.0	287	287	287	288	290	292	294	297	300	303	306	309	312	314	317
30.0	270	269	270	271	273	276	280	284	289	293	297	302	306	310	313
35.0	249	249	249	252	255	259	264	269	276	283	289	294	299	304	309
40.0	227	227	228	231	235	240	247	254	262	270	279	286	293	299	305
45.0	204	203	204	208	213	221	229	238	248	258	268	278	287	293	300
50.0	178	178	180	185	191	200	210	222	233	246	257	269	276	279	283
55.0	152	152	156	163	172	181	191	205	219	232	238	243	250	254	257
60.0	125	125	130	138	149	163	176	188	195	203	209	216	222	228	232
65.0	97.2	97.3	103	113	127	143	156	160	166	174	182	190	196	203	207
70.0	70.4	71.5	77.3	88.2	105	116	124	133	138	147	156	164	171	178	183
75.0	46.5	48.4	56.8	69.1	74.8	84.8	94.8	105	113	121	130	139	146	153	159
80.0	25.8	28.6	39.3	43.7	48.5	57.0	68.1	78.8	88.2	96.8	106	114	122	129	135
85.0	9.47	13.3	17.2	21.6	26.9	33.5	43.8	54.5	64.7	73.6	82.6	90.8	98.9	105	111
90.0	3.32	1.02	1.79	3.58	7.68	13.3	22.0	32.2	42.2	51.7	60.1	68.0	75.7	81.4	87.0
95.0	0.26	2.04	1.96	3.37	6.63	11.3	18.6	27.4	36.3	44.8	52.5	59.9	66.9	72.2	77.6
100.0	0.00	1.19	2.05	3.53	5.77	10.0	16.1	23.4	31.0	38.5	45.3	52.1	58.4	63.4	68.2
105.0	0.26	1.15	2.12	3.21	5.24	8.66	13.7	19.6	25.8	32.4	38.4	44.5	49.9	54.8	58.9
110.0	0.26	1.11	1.93	3.10	3.95	6.56	10.5	15.4	20.8	26.2	31.6	36.9	41.7	46.0	49.7
115.0	0.51	1.32	2.13	2.97	3.81	4.55	6.61	10.7	15.4	20.1	24.6	29.2	33.6	37.2	40.6
120.0	0.51	1.26	2.03	2.93	3.55	4.26	4.97	5.61	9.41	13.5	17.6	21.5	24.9	28.5	31.4
125.0	0.77	1.41	2.05	2.72	3.38	4.03	4.66	5.30	5.87	6.60	10.1	13.5	16.7	19.8	22.4
130.0	0.77	1.43	2.15	2.68	3.28	3.91	4.43	4.99	5.33	5.87	6.11	6.34	7.95	10.6	13.0
135.0	1.02	1.54	2.08	2.59	3.21	3.75	4.15	4.55	5.07	5.34	5.83	6.00	6.28	6.51	6.71
140.0	1.28	1.73	2.17	2.60	3.01	3.41	3.89	4.31	4.59	5.09	5.02	5.52	5.73	6.23	6.18
145.0	1.28	1.66	2.06	2.51	2.99	3.31	3.62	3.90	4.28	4.61	4.84	5.12	5.48	5.55	5.69
150.0	1.53	1.84	2.15	2.45	2.74	3.26	3.34	3.69	3.87	4.22	4.49	4.83	4.91	5.03	5.12
155.0	1.79	1.99	2.22	2.52	2.70	2.93	3.21	3.47	3.75	3.98	4.25	4.30	4.42	4.56	4.78
160.0	1.79	2.01	2.27	2.54	2.77	2.94	3.14	3.37	3.48	3.60	3.73	3.95	3.93	4.19	4.34
165.0	2.04	2.19	2.33	2.47	2.61	2.74	2.87	2.99	3.21	3.31	3.30	3.50	3.71	3.77	3.83
170.0	2.04	2.14	2.23	2.33	2.42	2.50	2.68	2.88	3.00	3.07	3.13	3.19	3.24	3.28	3.35
175.0	2.30	2.35	2.39	2.44	2.48	2.53	2.57	2.61	2.65	2.69	2.73	2.76	2.78	2.79	2.81
180.0	2.30	2.30	2.30	2.30	2.30	2.30	2.30	2.30	2.30	2.30	2.30	2.30	2.30	2.30	2.30

Test System:HOPOO HPG1900
Temperature:25.3DEG
Operators:
Test Date:2024年05月15日

Test Set: 5.0deg/s B-Beta (TYPE B)
Humidity:65.0%
Test Distance:16.000 m
Remarks:

HONGPU GONIOPHOTOMETERS SYSTEM TEST REPORT

LUMINOUS DISTRIBUTION INTENSITY DATA

Report number:

MANUFACTURER:	Address:		
NAME: 551119	TYPE:	WEIGHT:	
SPECIFICATION:	DIMENSION:	SERIAL No.:	

UNIT: cd

C (DEG) γ (DEG)	75	80	85	90	95	100	105	110	115	120	125	130	135	140	145
0.0	334	334	334	334	334	334	334	334	334	334	334	334	334	334	334
5.0	331	331	331	331	331	331	332	332	332	332	332	332	332	332	332
10.0	328	329	329	329	329	330	330	329	329	329	329	328	328	328	328
15.0	325	326	327	327	327	328	327	327	326	326	325	324	323	322	321
20.0	322	323	324	325	325	326	325	324	324	322	321	319	316	314	312
25.0	319	321	322	323	324	324	323	322	320	318	315	312	309	305	302
30.0	316	318	319	321	322	321	321	319	316	313	309	305	300	296	291
35.0	312	314	317	318	320	320	319	316	312	308	303	297	291	285	279
40.0	308	312	314	316	318	318	316	313	309	303	297	289	282	274	266
45.0	305	309	312	314	316	316	314	309	305	298	290	282	272	262	251
50.0	285	287	288	290	292	293	293	292	291	289	284	274	262	249	237
55.0	261	263	264	266	268	268	268	266	264	261	259	255	251	237	223
60.0	236	238	240	242	243	244	243	241	238	234	230	224	219	214	211
65.0	211	214	216	218	219	219	217	214	211	207	201	194	188	182	178
70.0	187	190	192	194	194	194	192	189	185	180	173	166	158	151	145
75.0	163	166	168	170	170	169	167	163	159	153	145	138	130	121	113
80.0	139	142	144	145	146	144	142	138	133	126	118	111	102	91.9	81.5
85.0	115	118	120	121	121	120	117	113	108	100	91.7	84.0	74.5	63.3	52.1
90.0	91.1	94.4	96.5	97.2	96.7	94.7	91.6	88.0	82.9	74.7	66.0	58.3	48.3	36.0	24.3
95.0	81.4	84.5	86.5	87.2	86.7	84.7	81.8	78.3	73.4	65.9	57.8	50.7	41.7	30.8	20.3
100.0	71.8	74.7	76.5	77.2	76.7	74.8	72.1	68.7	64.2	57.5	50.1	43.6	35.7	26.4	16.9
105.0	62.2	64.9	66.6	67.2	66.6	64.9	62.5	59.1	55.0	49.3	42.6	36.7	29.8	22.4	14.2
110.0	52.7	55.0	56.7	57.2	56.6	55.0	52.9	49.6	46.0	41.2	35.3	29.8	23.8	17.9	11.2
115.0	43.2	45.2	46.7	47.2	46.6	45.2	43.2	40.1	37.0	32.7	27.8	22.5	17.7	12.7	7.73
120.0	33.7	35.5	36.8	37.2	36.6	35.4	33.4	30.9	27.9	24.4	20.0	15.4	11.2	6.88	2.81
125.0	24.2	25.8	26.8	27.1	26.6	25.5	23.9	21.5	18.9	15.6	12.1	8.23	4.37	3.48	3.10
130.0	14.6	16.1	16.9	17.1	16.6	15.6	14.2	12.2	9.69	6.86	5.06	4.46	3.92	3.55	3.16
135.0	6.80	7.12	7.27	7.16	6.90	6.61	6.30	6.00	5.57	5.16	4.76	4.43	4.05	3.57	3.33
140.0	6.26	6.58	6.79	6.62	6.41	6.29	5.96	5.66	5.32	4.96	4.65	4.35	4.04	3.70	3.36
145.0	5.84	6.04	6.24	6.08	5.95	5.88	5.66	5.33	5.13	4.79	4.51	4.22	3.95	3.81	3.54
150.0	5.45	5.50	5.62	5.54	5.49	5.33	5.21	4.93	4.80	4.62	4.31	4.06	3.85	3.63	3.45
155.0	4.92	4.97	5.01	5.00	4.99	4.92	4.86	4.71	4.38	4.30	4.22	3.89	3.71	3.53	3.38
160.0	4.39	4.50	4.45	4.46	4.45	4.46	4.29	4.30	4.22	3.93	3.81	3.77	3.70	3.41	3.24
165.0	3.88	3.95	3.91	3.92	3.91	3.95	3.96	3.76	3.85	3.74	3.68	3.46	3.28	3.19	3.13
170.0	3.38	3.36	3.38	3.38	3.38	3.36	3.43	3.46	3.39	3.19	3.29	3.28	3.20	3.14	3.08
175.0	2.82	2.83	2.84	2.84	2.84	2.83	2.82	2.81	2.81	2.87	2.92	2.93	2.90	2.87	2.81
180.0	2.30	2.30	2.30	2.30	2.30	2.30	2.30	2.30	2.30	2.30	2.30	2.30	2.30	2.30	2.30

Test System:HOPOO HPG1900
Temperature:25.3DEG
Operators:
Test Date:2024年05月15日

Test Set: 5.0deg/s B-Beta (TYPE B)
Humidity:65.0%
Test Distance:16.000 m
Remarks:

HONGPU GONIOPHOTOMETERS SYSTEM TEST REPORT

LUMINOUS DISTRIBUTION INTENSITY DATA

Report number:

MANUFACTURER:	Address:		
NAME: 551119	TYPE:	WEIGHT:	
SPECIFICATION:	DIMENSION:	SERIAL No.:	

UNIT: cd

C (DEG) γ (DEG)	150	155	160	165	170	175	180	185	190	195	200	205	210	215	220
0.0	334	334	334	334	334	334	334	334	334	334	334	334	334	334	334
5.0	332	332	332	332	332	332	332	330	329	327	326	324	323	322	321
10.0	327	327	327	327	327	327	327	324	321	318	315	313	310	308	306
15.0	320	319	318	318	317	317	317	313	309	305	301	298	295	292	289
20.0	310	309	307	306	305	305	305	299	294	289	284	280	276	273	270
25.0	299	297	294	292	291	290	290	283	276	271	266	261	257	254	251
30.0	287	283	279	276	274	272	272	264	257	251	245	241	237	234	231
35.0	273	267	262	258	254	253	252	243	235	229	224	219	216	213	210
40.0	257	250	243	238	233	230	229	220	212	206	201	197	194	191	190
45.0	241	232	223	216	210	207	205	195	187	182	177	174	171	170	169
50.0	225	213	203	194	187	182	179	169	162	157	153	151	149	149	148
55.0	209	196	184	172	163	156	152	143	136	132	129	128	128	128	128
60.0	195	180	164	150	138	130	125	116	111	108	107	107	107	108	108
65.0	175	163	145	128	113	103	96.5	88.9	85.5	84.4	85.1	86.1	87.5	88.4	89.6
70.0	140	136	128	107	89.6	76.6	68.8	63.2	61.8	62.9	65.4	66.8	68.2	69.9	71.7
75.0	106	102	95.8	89.2	68.4	52.2	42.7	39.0	40.5	44.2	46.3	48.3	50.4	52.6	54.4
80.0	75.9	71.2	62.6	56.0	51.6	31.8	18.9	18.4	23.0	26.4	29.4	32.0	33.9	35.8	38.0
85.0	47.7	41.7	33.4	26.9	23.1	19.4	1.53	6.71	8.87	12.4	14.9	17.0	18.5	20.0	22.1
90.0	20.7	14.8	7.16	3.07	1.53	0.00	0.51	0.00	0.51	1.28	2.30	3.07	3.84	4.86	6.65
95.0	16.7	12.2	5.97	2.00	0.90	0.26	0.00	0.00	0.38	1.05	1.68	2.58	3.18	4.13	5.75
100.0	13.0	10.4	4.77	1.36	0.29	0.38	0.26	0.17	0.26	0.81	1.31	2.03	2.67	3.53	4.98
105.0	8.56	6.98	2.93	0.52	0.58	0.54	0.26	0.34	0.44	0.28	0.90	1.38	2.22	3.18	3.98
110.0	6.22	3.24	0.78	0.82	0.70	0.69	0.26	0.39	0.51	0.52	0.51	1.00	1.60	2.57	3.46
115.0	3.16	1.46	1.24	1.00	0.91	0.96	0.51	0.51	0.51	0.51	0.69	0.77	1.25	1.79	2.61
120.0	2.31	1.75	1.45	1.23	1.20	1.12	0.77	0.72	0.72	0.77	0.77	0.99	1.16	1.27	1.88
125.0	2.54	2.17	1.79	1.51	1.37	1.32	0.77	0.77	0.81	0.89	1.02	1.02	1.26	1.28	1.52
130.0	2.79	2.45	2.16	1.81	1.73	1.61	1.02	1.03	1.08	1.02	1.14	1.28	1.35	1.48	1.53
135.0	2.96	2.70	2.34	2.10	1.86	1.68	1.28	1.28	1.28	1.28	1.31	1.51	1.53	1.53	1.72
140.0	3.08	2.86	2.53	2.39	2.12	1.95	1.53	1.49	1.38	1.46	1.53	1.53	1.66	1.68	1.79
145.0	3.17	2.89	2.69	2.51	2.36	2.20	1.53	1.53	1.55	1.59	1.61	1.62	1.79	1.79	1.92
150.0	3.31	3.08	2.93	2.74	2.48	2.24	1.79	1.79	1.79	1.79	1.79	1.79	1.88	1.89	1.90
155.0	3.19	3.03	2.87	2.73	2.59	2.44	1.79	1.80	1.81	1.83	1.84	1.85	1.86	2.00	2.04
160.0	3.11	2.95	2.82	2.70	2.57	2.43	2.04	2.04	2.04	2.04	2.04	2.04	2.04	1.91	2.01
165.0	3.15	3.07	2.95	2.76	2.58	2.43	2.04	2.04	2.04	2.04	2.04	2.04	2.04	2.04	2.04
170.0	3.01	2.93	2.77	2.62	2.50	2.39	2.04	2.05	2.05	2.06	2.06	2.07	2.06	2.05	2.04
175.0	2.72	2.63	2.55	2.47	2.41	2.35	2.04	2.04	2.04	2.04	2.04	2.04	2.04	2.04	2.04
180.0	2.30	2.30	2.30	2.30	2.30	2.30	2.04	2.04	2.04	2.04	2.04	2.04	2.04	2.04	2.04

Test System:HOPOO HPG1900
Temperature:25.3DEG
Operators:
Test Date:2024年05月15日

Test Set: 5.0deg/s B-Beta (TYPE B)
Humidity:65.0%
Test Distance:16.000 m
Remarks:

HONGPU GONIOPHOTOMETERS SYSTEM TEST REPORT

LUMINOUS DISTRIBUTION INTENSITY DATA

Report number:

MANUFACTURER:	Address:				
NAME: 551119	TYPE:			WEIGHT:	
SPECIFICATION:	DIMENSION:			SERIAL No.:	

UNIT: cd

C (DEG) γ (DEG)	225	230	235	240	245	250	255	260	265	270	275	280	285	290	295
0.0	334	334	334	334	334	334	334	334	334	334	334	334	334	334	334
5.0	320	319	318	317	316	316	315	315	315	315	315	315	315	315	316
10.0	304	302	301	299	298	297	297	296	296	296	296	296	296	297	297
15.0	287	285	283	281	280	279	278	277	277	277	277	277	277	278	279
20.0	268	266	264	263	261	260	259	259	258	258	258	258	258	259	259
25.0	248	247	245	244	242	241	240	240	239	239	239	239	239	239	240
30.0	229	227	225	224	223	222	221	221	220	220	220	220	220	220	220
35.0	209	207	206	205	204	203	202	202	201	201	201	200	200	200	201
40.0	188	187	186	185	185	184	184	183	182	182	182	181	181	181	181
45.0	168	167	167	166	166	165	165	164	163	163	163	162	162	162	161
50.0	148	148	147	147	147	147	147	147	147	146	146	145	145	144	143
55.0	128	129	129	130	130	130	130	130	130	130	129	129	128	127	126
60.0	109	110	111	112	113	113	113	114	113	113	113	112	111	110	109
65.0	91.1	92.4	93.6	94.7	95.5	96.0	96.4	96.7	96.7	96.5	96.1	95.4	94.6	93.5	92.2
70.0	73.3	74.9	76.3	77.6	78.4	79.2	79.5	79.9	80.0	79.8	79.5	78.9	78.0	77.1	75.8
75.0	56.2	57.8	59.3	60.6	61.5	62.4	62.7	63.1	63.2	63.2	63.0	62.4	61.6	60.8	59.8
80.0	39.6	41.2	42.5	43.9	44.8	45.6	46.0	46.3	46.5	46.5	46.4	45.9	45.3	44.6	43.7
85.0	23.5	24.9	26.0	27.2	28.1	28.9	29.2	29.5	29.7	29.9	29.8	29.4	29.0	28.5	27.8
90.0	7.68	8.96	9.72	10.7	11.5	12.2	12.5	12.8	13.0	13.3	13.3	13.0	12.8	12.5	12.0
95.0	6.72	7.88	8.65	9.63	10.3	11.0	11.3	11.6	11.8	12.0	12.0	11.7	11.5	11.2	10.7
100.0	5.84	6.82	7.67	8.55	9.20	9.86	10.1	10.4	10.6	10.8	10.7	10.5	10.2	9.96	9.54
105.0	4.99	5.96	6.74	7.48	8.05	8.66	8.92	9.30	9.40	9.55	9.54	9.24	9.00	8.71	8.33
110.0	4.20	4.99	5.74	6.33	6.99	7.47	7.72	8.15	8.18	8.30	8.28	7.97	7.74	7.48	7.06
115.0	3.44	4.02	4.73	5.32	5.93	6.28	6.58	6.99	6.97	7.05	7.03	6.71	6.54	6.23	5.78
120.0	2.55	3.25	3.75	4.42	4.82	5.10	5.42	5.73	5.75	5.80	5.77	5.41	5.32	5.06	4.56
125.0	1.58	2.27	2.70	3.32	3.70	3.97	4.21	4.42	4.52	4.55	4.52	4.07	4.06	3.82	3.32
130.0	1.76	1.79	2.02	2.24	2.54	2.80	3.00	3.16	3.26	3.29	3.27	2.89	2.79	2.58	2.31
135.0	1.79	1.79	2.01	2.03	2.04	2.04	2.16	2.04	2.04	2.04	2.04	2.02	1.79	1.79	1.79
140.0	1.79	1.97	1.98	2.04	2.01	2.04	2.27	2.18	2.04	2.04	2.04	2.04	1.79	1.79	1.79
145.0	1.94	1.95	2.04	2.02	2.04	2.04	2.15	2.18	2.04	2.04	2.04	2.04	1.73	1.79	1.79
150.0	1.95	2.04	2.01	2.04	2.04	2.21	2.04	2.04	2.04	2.04	2.04	2.04	1.90	1.79	1.79
155.0	2.04	1.93	2.04	2.04	2.14	2.08	2.14	2.04	2.04	2.04	2.04	2.04	2.04	1.78	1.79
160.0	2.04	2.04	2.04	2.14	2.08	2.07	2.05	2.04	2.04	2.04	2.04	2.04	2.04	2.04	1.82
165.0	2.07	2.11	2.08	2.04	2.10	2.05	2.04	2.04	2.04	2.04	2.04	2.04	2.04	2.04	2.04
170.0	2.04	2.07	2.08	2.04	2.04	2.04	2.04	2.04	2.04	2.04	2.04	2.04	2.04	2.04	2.04
175.0	2.04	2.04	2.04	2.04	2.04	2.04	2.04	2.04	2.04	2.04	2.04	2.04	2.04	2.04	2.04
180.0	2.04	2.04	2.04	2.04	2.04	2.04	2.04	2.04	2.04	2.04	2.04	2.04	2.04	2.04	2.04

Test System:HOPOO HPG1900
Temperature:25.3DEG
Operators:
Test Date:2024年05月15日

Test Set: 5.0deg/s B-Beta (TYPE B)
Humidity:65.0%
Test Distance:16.000 m
Remarks:

HONGPU GONIOPHOTOMETERS SYSTEM TEST REPORT

LUMINOUS DISTRIBUTION INTENSITY DATA

Report number:

MANUFACTURER:	Address:		
NAME: 551119	TYPE:	WEIGHT:	
SPECIFICATION:	DIMENSION:	SERIAL No.:	

UNIT: cd

C (DEG) γ (DEG)	300	305	310	315	320	325	330	335	340	345	350	355
0.0	334	334	334	334	334	334	334	334	334	334	334	334
5.0	316	317	318	319	320	321	322	323	325	326	328	329
10.0	298	299	301	302	304	306	308	310	313	315	318	321
15.0	280	281	282	284	287	289	292	295	298	302	306	311
20.0	260	262	263	265	268	271	274	278	282	286	292	297
25.0	241	242	244	246	248	251	254	258	263	268	274	280
30.0	221	222	223	225	227	230	233	237	242	247	254	261
35.0	201	202	203	204	206	208	211	215	220	225	232	240
40.0	181	181	182	183	184	186	188	192	196	202	209	217
45.0	161	161	161	161	162	164	166	169	172	178	184	193
50.0	142	141	141	141	141	142	143	145	148	153	159	167
55.0	125	123	122	121	120	120	121	122	124	127	133	141
60.0	107	106	104	102	101	99.0	98.6	99.0	100	103	107	114
65.0	90.7	88.9	87.2	85.3	82.9	80.8	78.7	77.5	77.5	78.7	81.8	87.4
70.0	74.3	72.6	70.8	68.7	66.4	63.8	61.3	58.6	56.8	56.7	58.0	62.1
75.0	58.2	56.7	54.9	52.9	50.6	48.1	45.5	42.5	39.8	37.4	37.1	39.3
80.0	42.4	41.2	39.7	37.7	35.8	33.6	31.2	28.5	25.7	22.8	20.1	19.9
85.0	26.9	25.9	24.7	23.2	21.8	20.1	18.3	16.2	14.1	11.6	8.48	5.01
90.0	11.5	10.7	9.98	8.96	8.19	7.16	6.14	5.12	4.09	2.81	1.79	0.26
95.0	10.2	9.50	8.72	7.76	6.96	5.99	4.97	3.94	2.89	1.88	0.85	0.00
100.0	8.93	8.30	7.53	6.64	5.83	4.89	3.92	2.69	1.85	0.85	0.00	0.00
105.0	7.72	7.09	6.35	5.56	4.74	3.79	2.82	2.01	0.96	0.03	0.00	0.00
110.0	6.58	5.82	5.27	4.49	3.75	2.82	2.06	1.08	0.51	0.22	0.22	0.18
115.0	5.34	4.51	4.15	3.34	2.67	1.99	1.07	0.70	0.49	0.51	0.19	0.35
120.0	4.17	3.55	3.00	2.43	1.62	1.02	0.86	0.73	0.69	0.51	0.43	0.43
125.0	2.97	2.55	1.60	1.33	1.05	1.02	0.97	0.95	0.77	0.63	0.59	0.55
130.0	1.75	1.53	1.40	1.23	1.23	1.05	1.02	1.02	0.89	0.87	0.77	0.77
135.0	1.53	1.53	1.49	1.28	1.24	1.24	1.17	1.02	1.02	1.02	1.00	0.85
140.0	1.75	1.53	1.50	1.45	1.36	1.13	1.17	1.18	1.11	1.06	1.02	1.02
145.0	1.79	1.67	1.53	1.53	1.52	1.40	1.30	1.18	1.25	1.15	1.14	1.24
150.0	1.79	1.79	1.70	1.53	1.53	1.50	1.47	1.36	1.34	1.32	1.29	1.28
155.0	1.79	1.79	1.79	1.79	1.64	1.53	1.53	1.53	1.53	1.51	1.39	1.31
160.0	1.79	1.79	1.79	1.79	1.79	1.79	1.79	1.78	1.63	1.55	1.54	1.53
165.0	1.98	1.84	1.79	1.79	1.79	1.79	1.79	1.79	1.79	1.79	1.79	1.79
170.0	2.04	2.04	2.04	2.04	2.00	1.94	1.86	1.79	1.79	1.79	1.79	1.79
175.0	2.04	2.04	2.04	2.04	2.04	2.04	2.04	2.04	2.04	2.04	2.04	2.04
180.0	2.04	2.04	2.04	2.04	2.04	2.04	2.04	2.04	2.04	2.04	2.04	2.04

Test System:HOPOO HPG1900
Temperature:25.3DEG
Operators:
Test Date:2024年05月15日

Test Set: 5.0deg/s B-Beta (TYPE B)
Humidity:65.0%
Test Distance:16.000 m
Remarks: